





HENDRYMARINE.COM

Our Business

Hendry Marine Industries, Inc. (HMI) consists of a diverse range of maritime businesses, including commercial and government ship repair, marine environmental services, sandblasting and coating, and maritime employee staffing. Major operating companies include Gulf Marine Repair Corporation, Universal Environmental Solutions, LLC; Anchor Sandblasting and Coatings, LLC; and Port Staffing, Inc.

Our History

The Hendry family entered the maritime business in 1926 when Captain F.M. Hendry decided to enter the construction aggregate business and then later the dredging business. Captain Hendry passed the business on to his son, Aaron W. Hendry, and under Aaron's visionary leadership, he moved the company away from construction aggregate and dredging and into ship repair and maintenance. In 1988, Aaron acquired Gulf Tampa Drydock and changed the name to Gulf Marine Repair. Aaron took great pride in the shipyard and valued quality work, customer relationships, and providing jobs for his employees. He had the foresight to start Universal Environmental Solutions in 2012 so the shipyard could offer gas-freeing and cargo conversion services, and Anchor Sandblasting and Coatings joined the family in 2017, so the shipyard is now a full-service family of maritime companies.

Our People

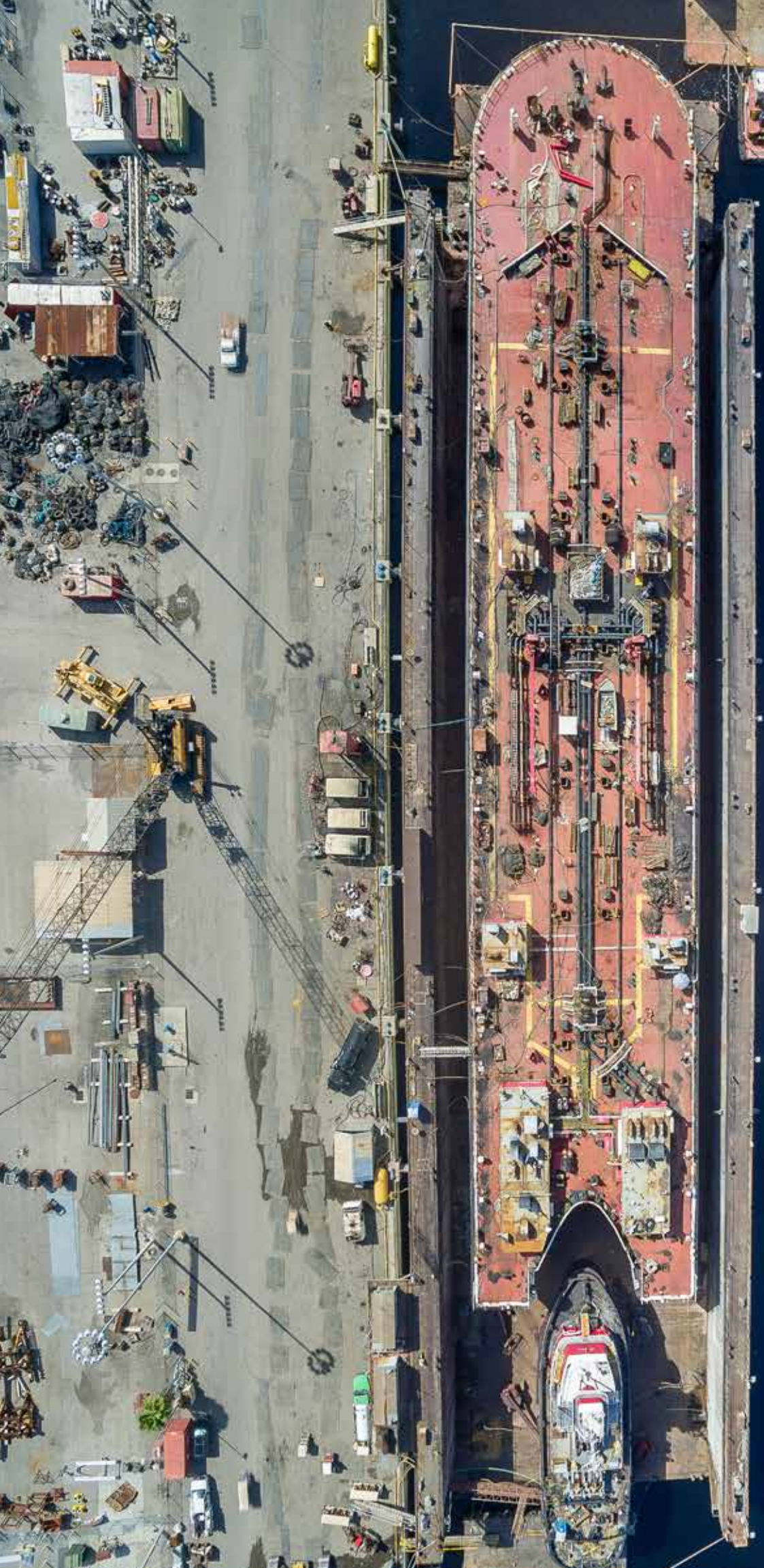
We are one of only 9,600 ESOP companies in the United States. Our company provides our employees with stock ownership which provides a sense of ownership that delivers increased production, dedication, and pride in workmanship.

Our Vision

Our vision is to be recognized as the industry leader of shipyard and marine-related services that leverage our core competencies and assets as a result of our employee-owners providing long-lasting relationships with our customers, community, and partners; best-in-class work quality; and superior environmental, health and safety performance, all built on a commitment to growth and continuous improvement.

Our Promise

We are focused on growing our current business lines while keeping an eye toward future opportunities for expansion and diversification. Our goal is to continue to foster a relationship-based commercial strategy, allowing us to build upon and maximize the substantial, long-term industry relationships and the solid reputation of our team from the Craftsmen to the Executives.



A Full Service
Family of Maritime
Companies



We look forward to
providing solutions for
your ship repair and
maintenance and other
marine-related needs.



GULF MARINE
GulfMarineRepair.com



ANCHOR SANDBLASTING AND COATINGS, LLC
AnchorSandblasting.com



UNIVERSAL ENVIRONMENTAL SOLUTIONS, LLC
UESTampa.com

As a member of the HMI family of companies, Universal Environmental Solutions team specializes in marine services, site remediation, brokered waste and wastewater services. Our experienced and professional staff is ready to utilize our assets to handle your needs.

Wastewater Facility

- Processes up to 144,000 gallons of petroleum impacted water in a 24-hour period
- 350,000-gallon storage capacity tank farm

Our People

We are one of only 9,600 ESOP companies in the United States. Our company provides our employees with stock ownership which provides a sense of ownership that delivers increased production, dedication, and pride in workmanship.

Our Vision

Our vision is to be recognized as the industry leader of shipyard and marine-related services that leverage our core competencies and assets as a result of our employee-owners providing long-lasting relationships with our customers, community, and partners; best-in-class work quality; and superior environmental, health and safety performance, all built on a commitment to growth and continuous improvement.

Our Promise

We are focused on growing our current business lines while keeping an eye toward future opportunities for expansion and diversification. Our goal is to continue to foster a relationship-based commercial strategy, allowing us to build upon and maximize the substantial, long-term industry relationships and the solid reputation of our team from the Craftsmen to the Executives.



UNIVERSAL ENVIRONMENTAL SOLUTIONS, LLC

UESTampa.com

As a member of the HMI family of companies, Universal Environmental Solutions team specializes in marine services, site remediation, brokered waste and wastewater services. Our experienced and professional staff is ready to utilize our assets to handle your needs.

Services

- Gas-freeing and butterworthng
- Slop services
- Marine lead paint and asbestos abatement
- Environmental remediation
- General construction services (FL CGC #1505480)
- Brokered waste
- Non-hazardous waste transportation and disposal
- Industrial tank cleaning

Wastewater Facility

- Processes up to 144,000 gallons of petroleum impacted water in a 24-hour period
- 350,000-gallon storage capacity tank farm

Equipment

- (4) Vacuum trucks
- (1) Vacuum tanker
- (10) Portable frac tanks
- Vessel cleaning and gas-freeing is conducted at the Gulf Marine Repair Berth 247





ANCHOR SANDBLASTING AND COATINGS, LLC

AnchorSandblasting.com

As a member of the HMI family of companies, Anchor Sandblasting and Coatings, LLC, provides on-time, quality coatings and scaffolding solutions at a fair and transparent price to keep your ships moving.



Services

Surface Preparation

Sandblasting
Hydroblasting
Slurryblasting
Spongeblasting
Power Tooling

Coating Applications

Non-Skid
Phenolic Tank-Lining Systems
Epoxy Tank-Lining Systems
Exterior Main Deck Coatings
Hull Coatings

Scaffolding Solutions

Marine Swing Staging
Quick Erect Systems (QES) Scaffolding

Equipment

- (8) 32-Ton Grit Hoppers
- (4) 8-Ton Portable Grit Blasting Pots
- (7) 28-Ton Grit Blasting Pots
- (5) Dust Collectors
- (2) Portable Diesel Vacuums
- (7) Electric Vacuums
- (15) Vacuum Tanks
- (6) 185 CFM Air Compressors
- (11) 1300 CFM Air Compressors
- (3) 1600 CFM Air Compressors
- (6) Pressure Washing Units
- (9) UHP Units
- (31) High Lifts ranging from 40 ft. – 80 ft.
- (8) Portable Air Conditioning Units





GULF MARINE

GulfMarineRepair.com

Gulf Marine Repair specializes in the repair, conversion and modification of large oceangoing commercial vessels, tugs and barges, dredges, small ships, harbor tugs, as well as U.S. Coast Guard, MARAD, USACE and NOAA vessels.

We are equipped to meet all your commercial needs from beginning to end. Starting with gas-freeing and tank cleaning, we are one of the few shipyards nationwide that can handle this seamlessly at our docks, saving you time and money. Our yard works seven days-a-week, around the clock if necessary, to take care of our customer's needs.

Services

Commercial Services

- Steel renewal and fabrication
- 4,800-sq. ft. machine shop
- Sandblasting, UHP and painting
- Shipyard crane service
- Pipe repair
- Marine electricians
- Complete aluminum and steel welding capabilities
- Diesel repair
- Tank cleaning and gas-freeing
- Various non-destruction testing (NDT) methods
- Insulation and joiner

Waste & Remediation Services

We provide waste and remediation services through Universal Environmental Solutions, our environmental services company.

Government Services

Our government team has over 65 years of experience providing first-class services and dedication to the USCG, MARAD, USACE and NOAA. Our Project Managers, Superintendents and qualified Craftsmen are dedicated to meeting the company's commitment of providing the highest quality of service and will work with your team to ensure that each deliverable of your project is fulfilled to your satisfaction. We pride ourselves on our ability to provide solutions to our customer's most challenging requirements, while keeping a close eye on the bottom line.

Blasting & Coating

We provide blasting and coating solutions through Anchor Sandblasting and Coatings.

Waterfront Resources

We are located on the Ybor Ship Channel in Tampa, Florida. Our 3,200 linear feet of bulkhead provide ample space for quality ship repair services that result in total customer satisfaction.

See back for more specifics on our berths.

Support Services

Our support services include:

- (3) Drydocks
- (4) Tug boats
- (6) Track cranes
- Fully-equipped craft shops with overhead cranes



Our Facilities

Drydocks

The Scotia Drydock

Max Length: 600'
Max Breadth: 105'
Max Draft: 18'
Max Disp: 10,000 L.T.

The F.M. Hendry Drydock

Max Length: 250'
Max Breadth: 54'
Max Draft: 18'
Max Disp: 2,000 L.T.

The Pride Drydock

Max Length: 225'
Max Breadth: 60'
Max Draft: 18'6"
Max Disp: 1,400 L.T.

A.W. Hendry Drydock

Max Length: 311'
Max Breadth: 80'
Max Draft: 23'
Max Disp: 4,500 L.T.

Pierside Berthing

Berth 247

Max Length: 575'
Max Breadth: 110'
Max Draft: 31'
3 x 400 Amp Shore Power

Berth 248

Max Length: 850'
Max Breadth: 110'
Max Draft: 20'
4 x 400 Amp Shore Power

Berth 249

Max Length: 300'
Max Breadth: 80'
Max Draft: 15'
1 x 200 Amp Shore Power

Berth 250

Max Length: 700'
Max Breadth: 110'
Max Draft: 25'
4 x 400 Amp Shore Power

Berth 251/252

Max Length: 950'
Max Breadth: 120'
Max Draft: 30'
4 x 400 Amp Shore Power

Berth 253

Max Length: 880'
Max Breadth: 100'
Max Draft: 15'
3 x 300 Amp Shore Power



Services, Shops & Equipment

Crane Services

Floating Barge Crane	100 tons max
American Crawler Crane	210 tons max
Kobelco Crawler Crane	200 tons max
Kobelco Crawler Crane	250 tons max
Kobelco Crawler Crane	160 tons max
Assorted Mobile Cranes	20-30 tons max

Mobile Repairs

- Portable welding, cutting and fabrication equipment
- Mobile crew for off-site steel, piping and electrical repairs
- Experience in off-site work throughout the Port of Tampa and Greater Tampa Bay

Prefabrication Shop

- 13,500-sq. ft. facility
- 10' x 40' CNC plasma table with 1.5" metal thickness capability
- (2) 20-ton overhead cranes
- Sub-arc, automated angle welders

Machine Shop

- Lathe: 60" swing-40' between centers
- Lathe: 40" swing-67' between centers
- Lathe: 30" swing-30' between centers
- (2) 5-ton overhead cranes
- ABS Certified tailshaft clad welding
- 4" horizontal boring mill
- Bridgeport mills
- #4 vertical mill with 15" x 76" table
- Numerous smaller lathes
- Assorted presses, mills, etc.

Fabrication Shop

- (2) 5-ton overhead cranes
- Press break, rolls, sheers
- 500-ton capacity plate bending machine
- 12' bed press brake
- 750-ton shear
- Horizontal band saws
- Drill press
- 120-ton iron worker
- 55-ton iron worker
- Complete onsite and mobile certified welding equipment

A.W. Hendry Training Center

- Hands-on welding and fitting program in SMAW, FCAW (all positions), and stainless fillet, including air arc requirements
- Training in wash burning, beveling and marine fitting techniques
- Advanced training in pipe welding, unlimited plate and ceramic procedures
- Practical application area with simulated vessel work environment

Electrical Shop

- (32) 480-volt shore power hookup points throughout the yard
- Step down transformers to drop power to 208 or 240 volt 3 phase

EPA-Compliant Paint Shop

- 3,500-sq. ft. blasting booth
- 4,000-sq. ft. paint booth

Pipe Shop

- (2) 5-ton overhead cranes
- Pipe bender
- Cutting saw